

## Basket Weave

### Emery Classification

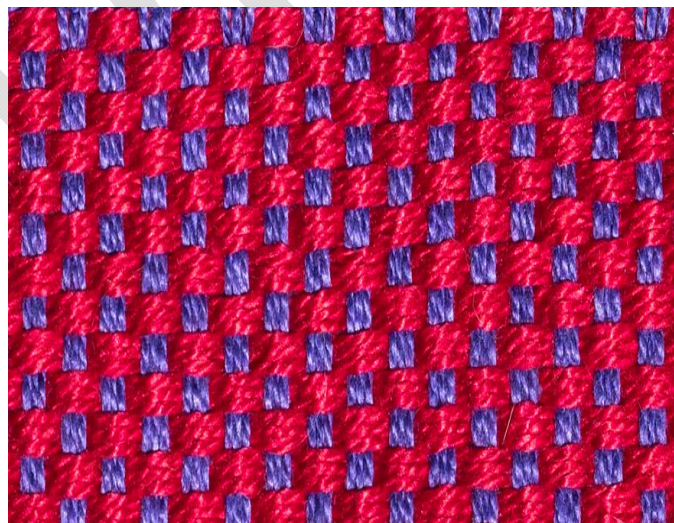
Plain Weave is a **simple weave** with the maximum intersections of warp and weft possible. A simple weave has two elements, a warp and a weft. Basket weave is a derivative of plain weave.

### Weaving Category

Basket weave is divided into three categories by Mary Elizabeth Laughlin in her book *More Than Four. A Book for Multiple Harness Weavers*. 1) a **common basket weave**, where the warp and weft have the same number of threads per repeat; the repeats could be 2, or 3 or more, but the number of picks have to be the same as the number of warp threads; 2) a **fancy basket weave** which is a combination of common basket weaves of different sizes; 3) A **figured basket weave** is a combination of common and/or fancy basket weaves requiring more than two shafts.

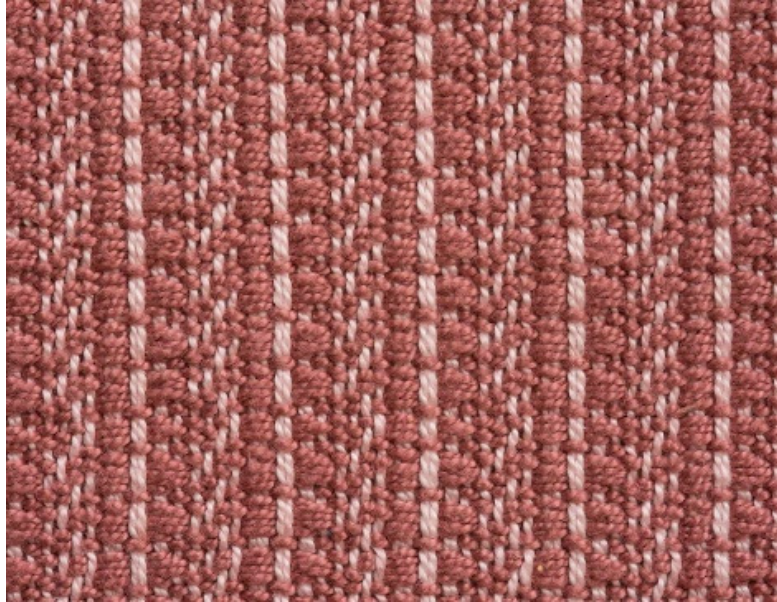
### Fabric Characteristics

Below is the fabric sample of a common basket weave woven with 3 threads and three picks. We can think of the three wefts and the three picks forming small blocks.



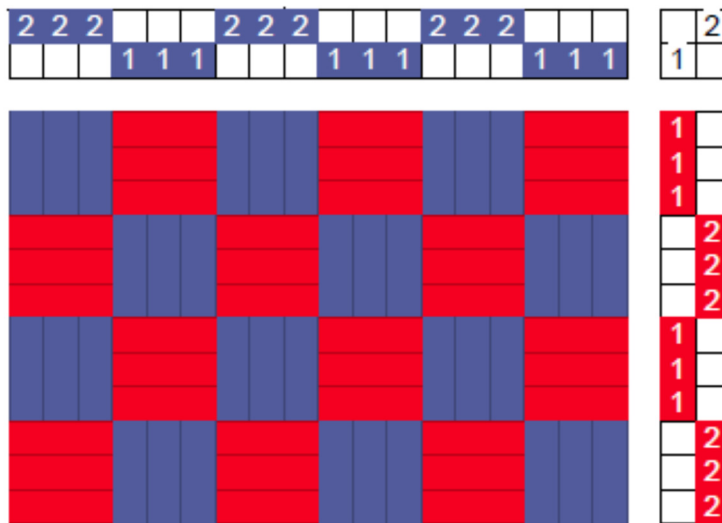
1 Basket Weave

Below is a fabric woven with an eight-shaft figured basket weave. Four shafts are sufficient to weave a figured basket weave, but more shafts offer more interesting possibilities. The warp and weft blocks are clearly visible.



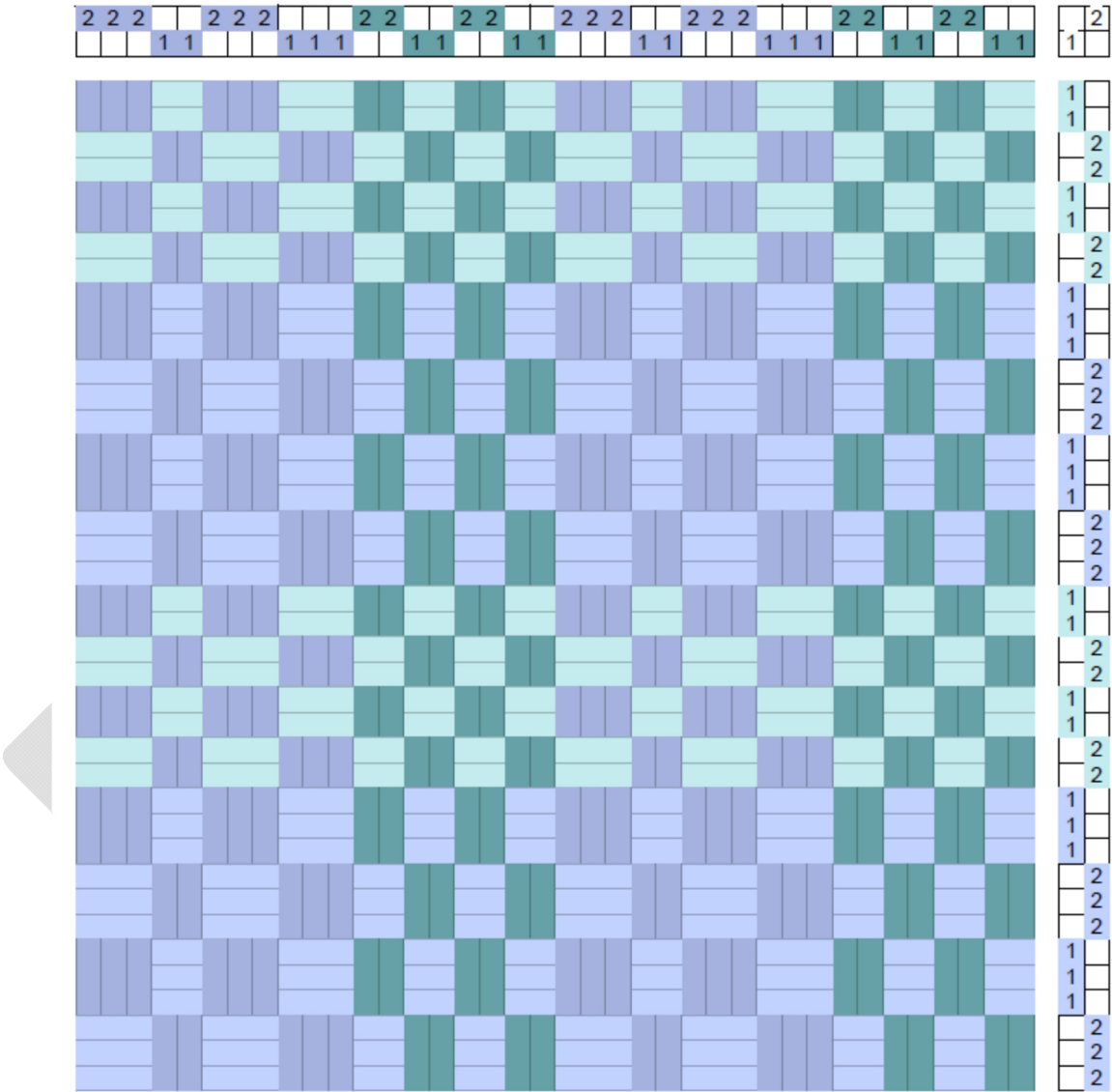
### Drawdown

The drawdown below (*sinking shed*) of a *common basket weave* was used to weave the first sample. The three by three arrangement on two shafts forms blocks.

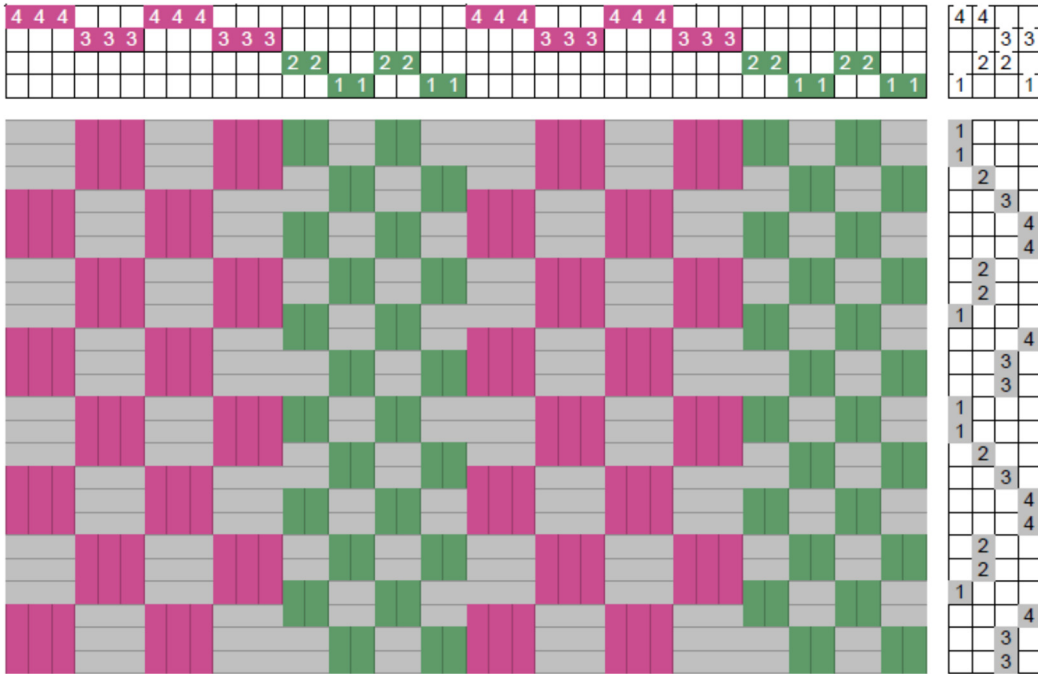


2 Basket Weave

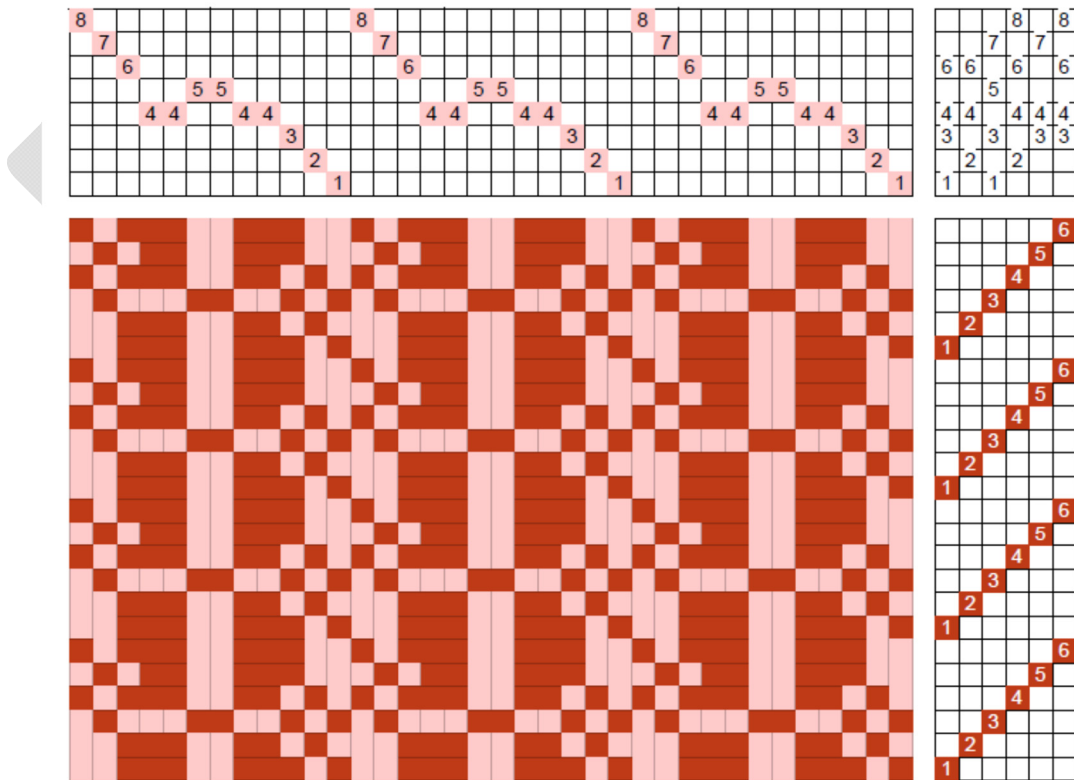
The *sinking shed* drawdown below is for a *fancy basket weave* formed using two sets of blocks on two shafts. One block has two repeats of each shaft, the other has three. When the treading steps match the number of warp threads, square blocks result. With a mismatch of warp threads and treading steps, horizontal or vertical oblong blocks result.



The next drawdown (*sinking shed*) combines blocks of two by two and three by three basket weave. Because they are on four shafts, the blocks are always square, although the floats between blocks can be long. This is a *figurative basket weave*.



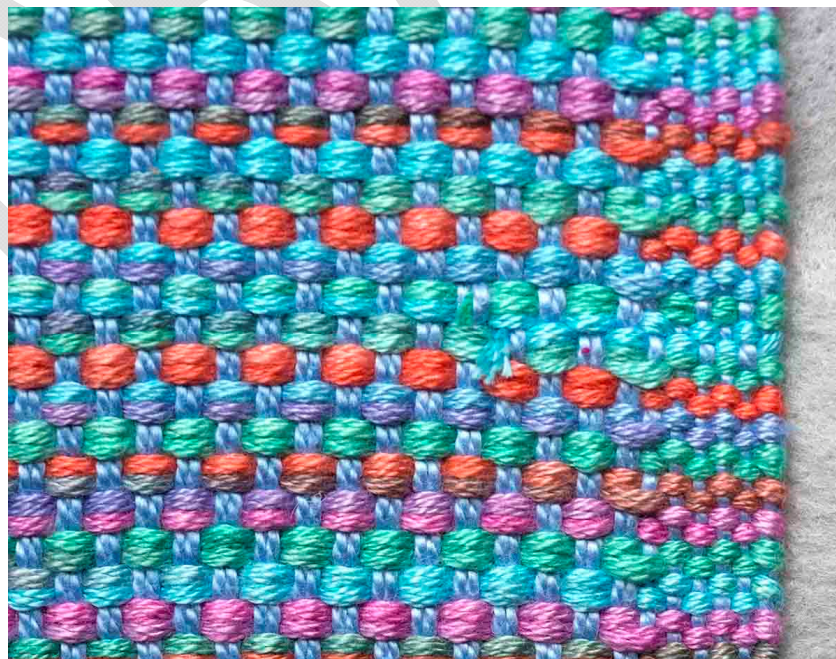
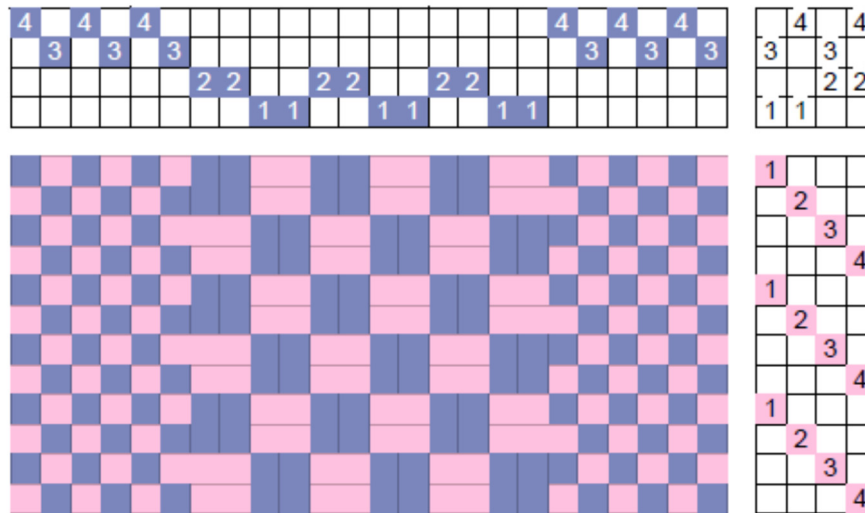
The following drawdown is also of a *figurative basket weave*, on eight shafts. It was used to weave the fabric sample on page two.



4 Basket Weave

## Combining Basket Weave with Plain Weave

Basket weaves need floating selvages because of the repeated treadling steps. On four shafts, plain weave can be added to avoid floating selvages as shown in the *sinking shed* drawdown below and the fabric sample. The plain weave warp ends should be tensioned separately since the intersection of the warp and weft in plain weave is different than that in the basket weaves.



5 Basket Weave

## **Function**

Basket weaves tend to be sturdy fabrics. They make great table mats and runners.

## **Sett**

Even though basket weave is a plain weave derivative, the sett should be that of a twill because of the longer floats.

## **Width of the floats**

The size of the yarn and thus the sett are the determinants of the width of the float.

## **Number of Blocks Available**

As already mentioned, two shafts are enough to weave common and fancy basket weaves. Four shafts are needed for a figurative basket weave. More shafts offer more design options.

## **Other Options**

Basket weave can be used for Log Cabin (see entry).

## **References**

Laughlin, Mary Elizabeth. *More Than Four: A Book for Multiple Harness Weaver*. Laughlin Enterprises Ltd. Newcastle, CA, 1976.